

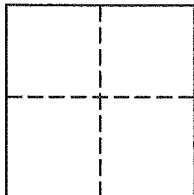
Lands of Krispel  
Job #: 161716

CORNER RECORD

Assessor's Parcel Number 199-281-03,04

Unincorporated in County of Marin, California

Brief Legal Description: Dividing line between Lots 33 and 34, as shown upon that certain map entitled, "Map of Seascape", filed for record January 13, 1966 in Volume 13 of Maps at Page 54, Marin County Records.



CORNER TYPE

Government Corner  Control

Meander  Property

Rancho  Other

Date of Survey January 29, 2016

COORDINATES (Optional)

N \_\_\_\_\_

E \_\_\_\_\_

Zone \_\_\_\_\_ NAD27  NAD83

NAD 83 Epoch \_\_\_\_\_

Elev. \_\_\_\_\_

Vert. Datum: NGVD29  NAVD88

Meas. Units: Metric  Imperial

Corner - Left as found  Found and tagged  Established  Reestablished  Rebuilt

Evidence used to identify or procedure used to establish or reestablish the corner:  
See Page 2 of 2 for information

A description of the physical condition of the monument as found and as set or reset:  
See Page 2 of 2 for information

SURVEYOR'S STATEMENT

This Corner Record was prepared by me or under my direction in conformance with

The Land Surveyor's Act on April 28, 2016.

Signed [Signature] P.L.S. 6649



COUNTY SURVEYOR'S STATEMENT

This Corner Record was received

MAY 4, 2016

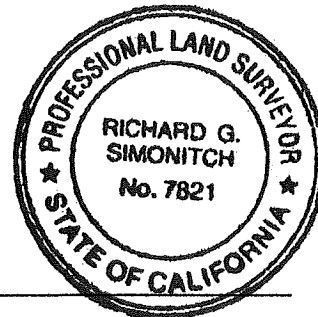
and examined and filed

AUGUST 24, 2016

Signed [Signature] P.L.S. or R.C.E. No. 7821

Title County Surveyor

County Surveyors' Comment \_\_\_\_\_



All distances shown are in feet and decimals thereof

**LEGEND**

PARK  
(50' R / W)

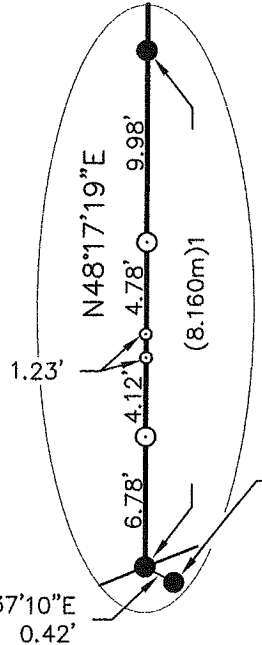
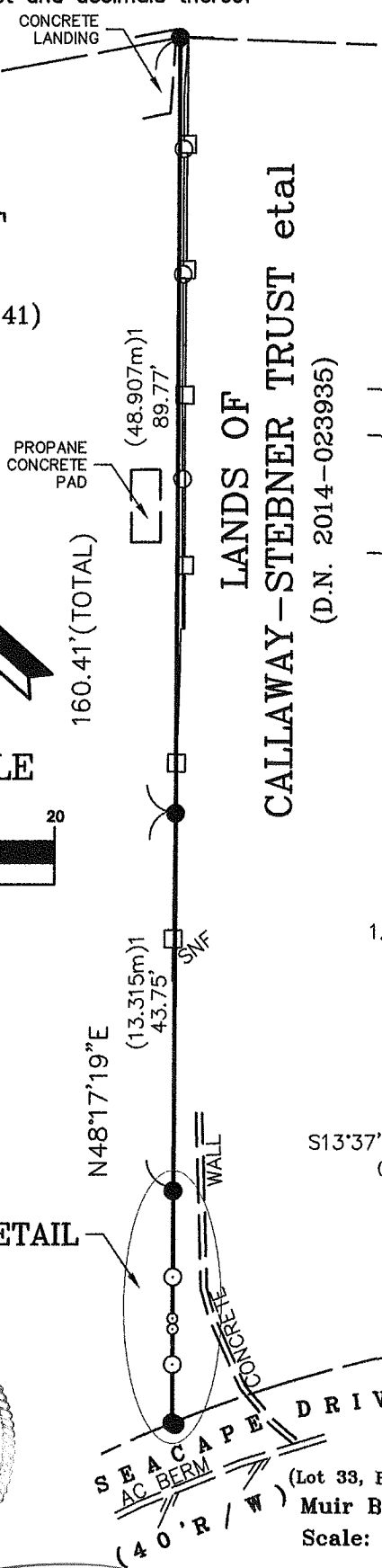
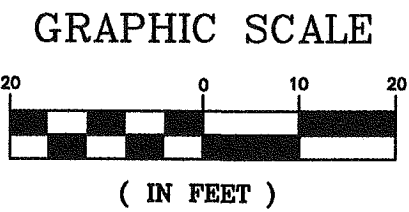
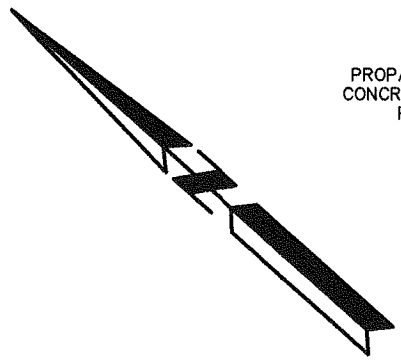
LANDS OF  
KRISPEL  
(D.N. 2008-009341)

LANDS OF  
CALLAWAY-STEUBNER TRUST et al  
(D.N. 2014-023935)

- Found 3/4" Iron Pipe & Yellow Plastic Plug Stamped, "LS 4794" (U.N.O.)
- Set Brass Nail & Mini-Brass Tag, Stamped "LS 6649" in Top of Tree Stump
- ⊙ Set 3/4" Iron Pipe & Yellow Plastic Plug, Stamped "L.A. Stevens PLS 6649" at Ground Surface

U.N.O. Unless Noted Otherwise

- Northerly Face of Wood Fence
- Iron Post & Wire Fence
- ( ) C.R. 199-281-04, filed 4/23/2012, Measured in Meters
- Edge of Asphalt Concrete Pavement



FOUND 3/4" IRON PIPE & BRASS TAG IN WOOD PLUG STAMPED, "LS 3835" AT GROUND SURFACE PER 2002 ROS 132

DETAIL  
1"=10'

SEE DETAIL



Lawrence A. Stevens, PLS 6649

Copyright © Lawrence A. Stevens 2016

CHECK PRINT  
LAST EDIT - 4/28/2016

**DRIVE Corner Record  
Lands of Krispel**

(Lot 33, Book 13 of Maps at Page 54, Marin County Records)  
Muir Beach Marin County California  
Scale: 1" = 20'  
April 2016

**L.A. Stevens & Associates, Inc.**

Professional Land Surveyors \* (415) 382-7713  
7 Commercial Blvd., Suite 1 \* Novato, CA 94949

Job # 16-1716

Page 2 Of 2